

## CK高精度强力铣刀柄



型号	对应基础柄 CK No.	夹持直径	L	螺母外径	对应扳手	质量 (kg)
<b>CK5-HMC20S</b>	CK5	φ20	57	50	FK45-50L	0.81
<b>CK6-HMC20</b>	CK6	φ20	56	60	FK58-62	1.31
<b>CK7-HMC32</b>	CK7	φ32	102	80	FK80-90	4.09

1. 附带扳手。

## CK斜插式镗刀



· BSA型



· BSB型

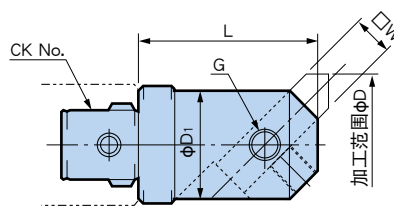


图1 BSA型

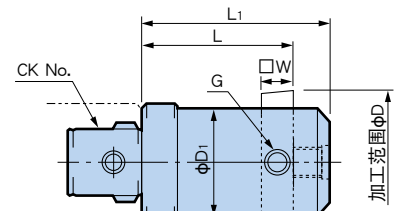


图2 BSB型

φD	图	型号	对应基础柄 CK No.	L	L <sub>1</sub>	φD <sub>1</sub>	G	□W
25 ~ 38	1	<b>CK1-BSA 25- 33</b>	CK1	32	—	19	M 6	8
30 ~ 42		<b>CK2-BSA 30- 37.5</b>	CK2	35.9		24		
38 ~ 52		<b>CK3-BSA 38- 56</b>	CK3	53.4		30	M 8	10
50 ~ 65		<b>CK4-BSA 50- 62</b>	CK4	59		39		
62 ~ 90		<b>CK5-BSA 62- 72</b>	CK5	70		50	M10	16
90 ~ 125		<b>CK6-BSA 90-101</b>	CK6	97		75		
105 ~ 160		<b>CK7-BSA105-132</b>	CK7	129		90	M12	25
20 ~ 40	2	<b>CK1-BSB 20- 33</b>	CK1	33	43	17	M 6	6
25 ~ 52		<b>CK2-BSB 25- 37.5</b>	CK2	37.5	52.5	24		
38 ~ 70		<b>CK3-BSB 38- 41</b>	CK3	41	56	30	M10	10
50 ~ 90		<b>CK4-BSB 50- 47</b>	CK4	47	62	39		
62 ~ 115		<b>CK5-BSB 62- 57</b>	CK5	57	72	50	M10	16
90 ~ 150		<b>CK6-BSB 90- 71</b>	CK6	71	86	75		
105 ~ 190		<b>CK7-BSB105-117</b>	CK7	117	132	90	M12	25

1. 不附带镗杆，请购买市场上出售的产品。